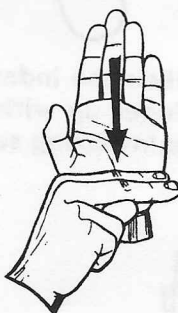


Inflections

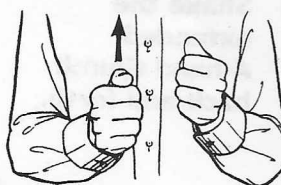
Following are some of the word endings commonly used. They may be added to the basic signs for more exact expression when appropriate.



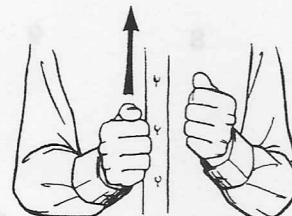
-MENT



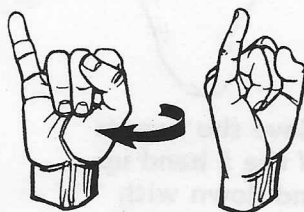
-NESS



-ER



-EST



-ING



-S



-S



-ED
Sign past.



-ED
(Alternative)



-EN



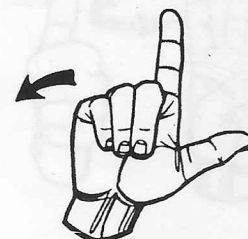
-Y



-LY



-LY
Sign L; then Y.
(Alternative)



Numbers

The palm generally faces forward unless otherwise indicated by illustration or description. Sign numbers, money, and years as they are spoken in English. For example: \$57.35 is signed "57" "dollar" "35" "cents"; and 1988 is signed "19" "88."

ZERO TO A MILLION



0



1



2



3



4



5



6



7