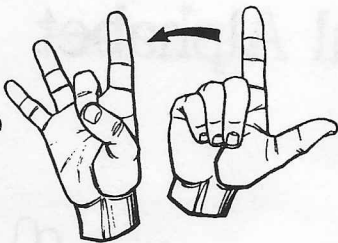
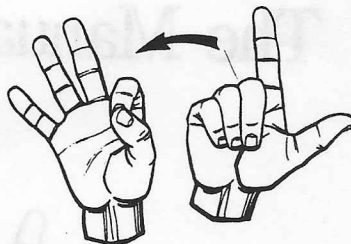


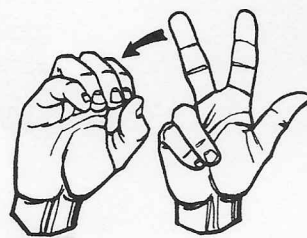
27



28



29



30



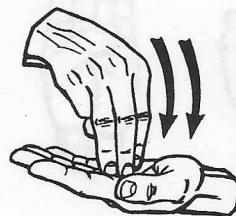
HUNDRED

Sign 1 (one), then C.



THOUSAND

Bring the right M fingertips down into the flat left hand.

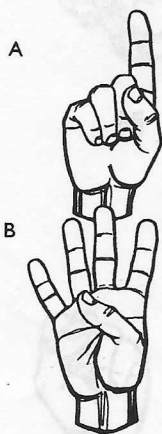


MILLION

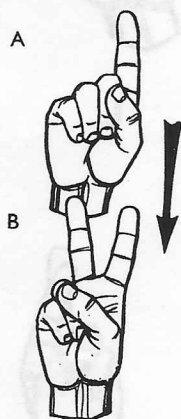
Bring the right M fingertips down into the flat left palm twice.

FRACTIONS

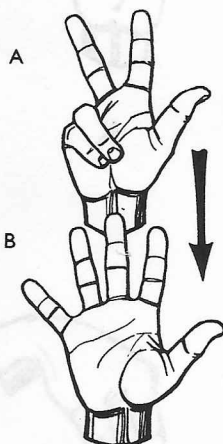
Sign the upper half of the fraction first, then lower the hand a short distance and sign the lower half.



1/4



1/2



3/5

CENTS



1¢



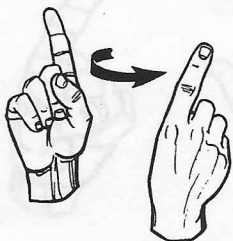
8¢

NUMBERS FOR PRACTICE

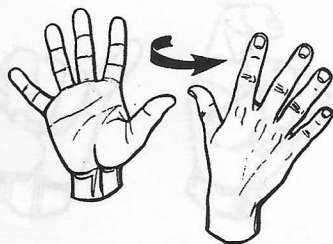
7	179	657	6,112
10	276	741	7,499
17	286	827	7,673
19	292	903	7,725
22	295	1,431	7,817
31	306	2,702	8,888
47	420	3,258	9,852
58	576	4,946	10,146
69	602	5,328	11,539
72	610	5,577	1,219,803
85	621	5,693	39,462,971
94	644	6,549	968,359,712

DOLLARS

A quick way for signing dollars 1 to 9 is with the palm facing forward, then dipping downward slightly as it turns until the palm faces self.



\$1.00



\$5.00